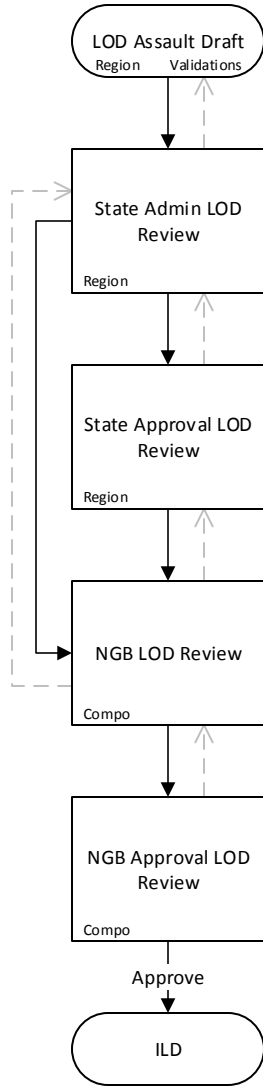


# NG Unrestricted Assault (Informal)

Key:

- Forward Actions
- - -> Return Actions
- Box Status
- Oval Start/Final Status
- Left Corner Status Scope
- Right Corner Validations displays if the Status has Required fields

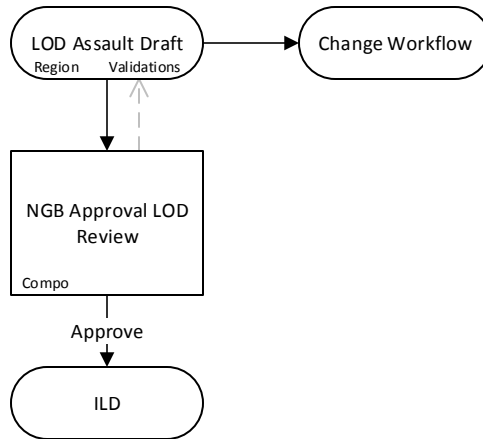


Status	Permission
LOD Assault Draft (NG)	LOD Assault Draft (NG)
NGB Approval LOD Review (NG)	NGB Approval LOD & Appeal Review
NGB LOD Review (NG)	NGB LOD & Appeal Review
State Admin LOD Review (NG)	State Admin LOD Review
State Approval LOD Review (NG)	State Approval LOD & Appeal Review

## NG Restricted Assault (Informal)

Key:

- Forward Actions
- - -> Return Actions
- Box Status
- Oval Start/Final Status
- Left Corner Status Scope
- Right Corner Validations displays if the Status has Required fields

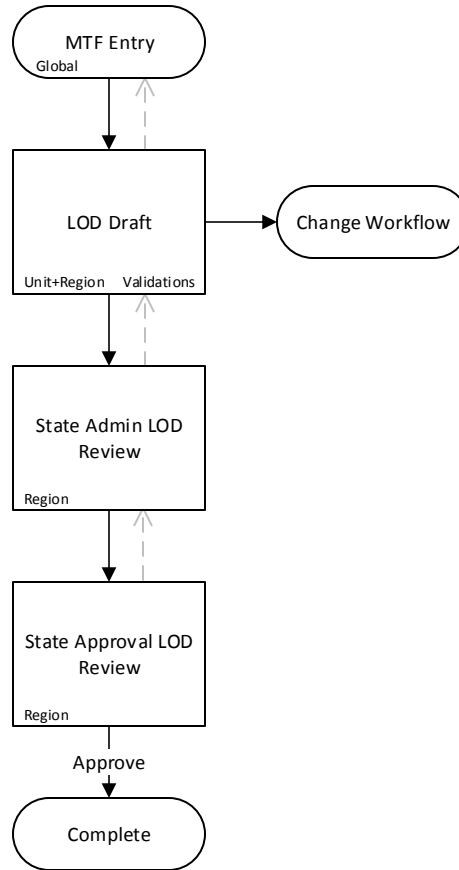


Status	Permission
LOD Assault Draft (NG)	LOD Assault Draft (NG)
NGB Approval LOD Review (NG)	NGB Approval LOD & Appeal Review

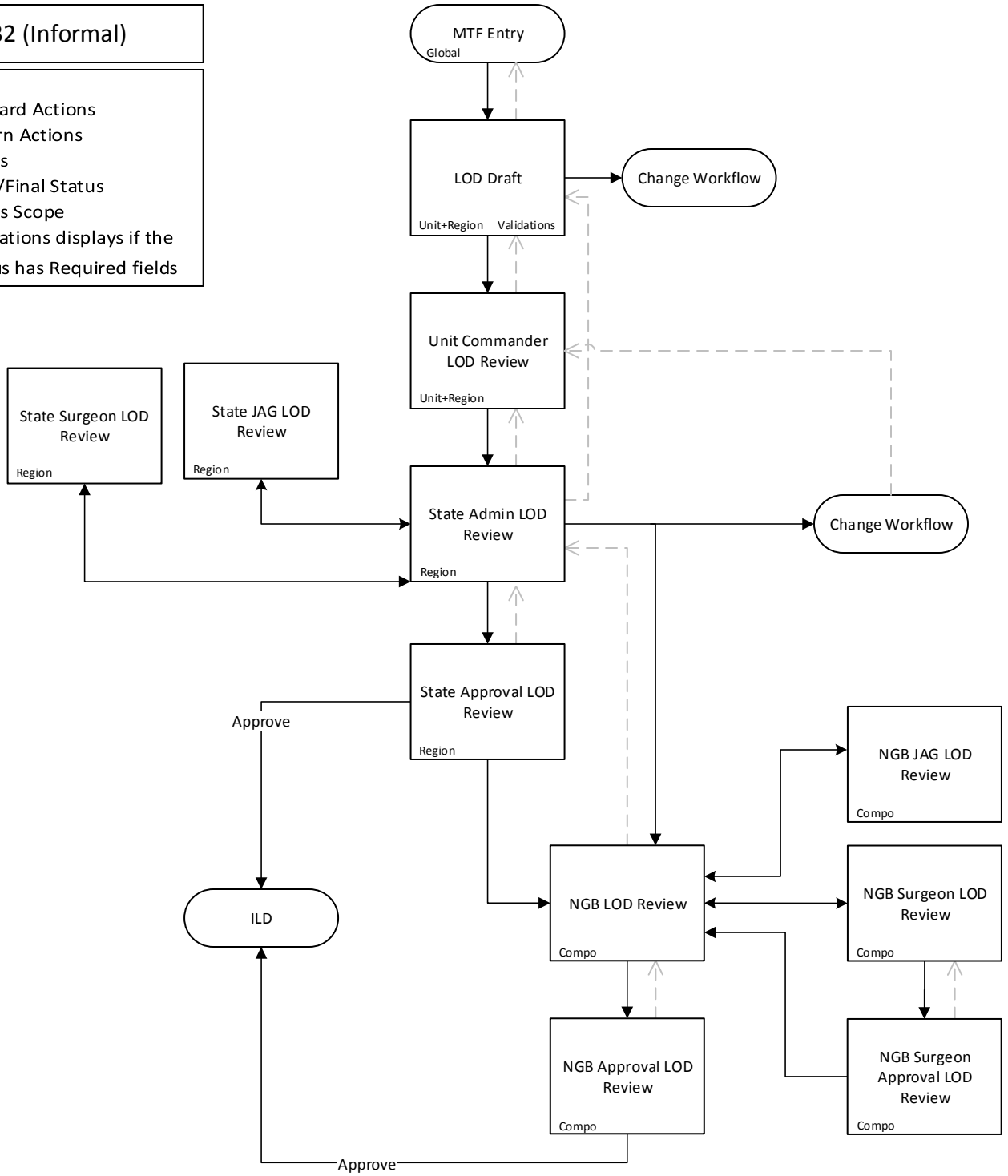
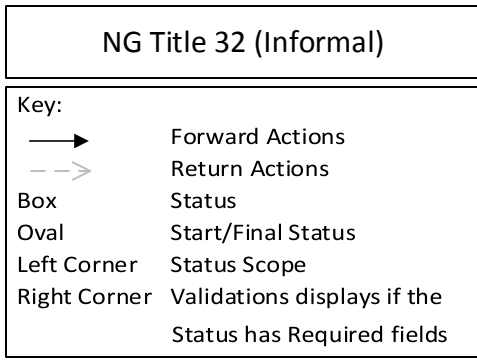
## NG Pre-Approved (Informal)

### Key:

- Forward Actions
- -> Return Actions
- Box Status
- Oval Start/Final Status
- Left Corner Status Scope
- Right Corner Validations displays if the Status has Required fields



Status	Permission
LOD Draft (NG)	LOD Draft (NG)
MTF Entry (NG)	MTF Entry (NG)
State Admin LOD Review (NG)	State Admin LOD Review
State Approval LOD Review (NG)	State Approval LOD & Appeal Review

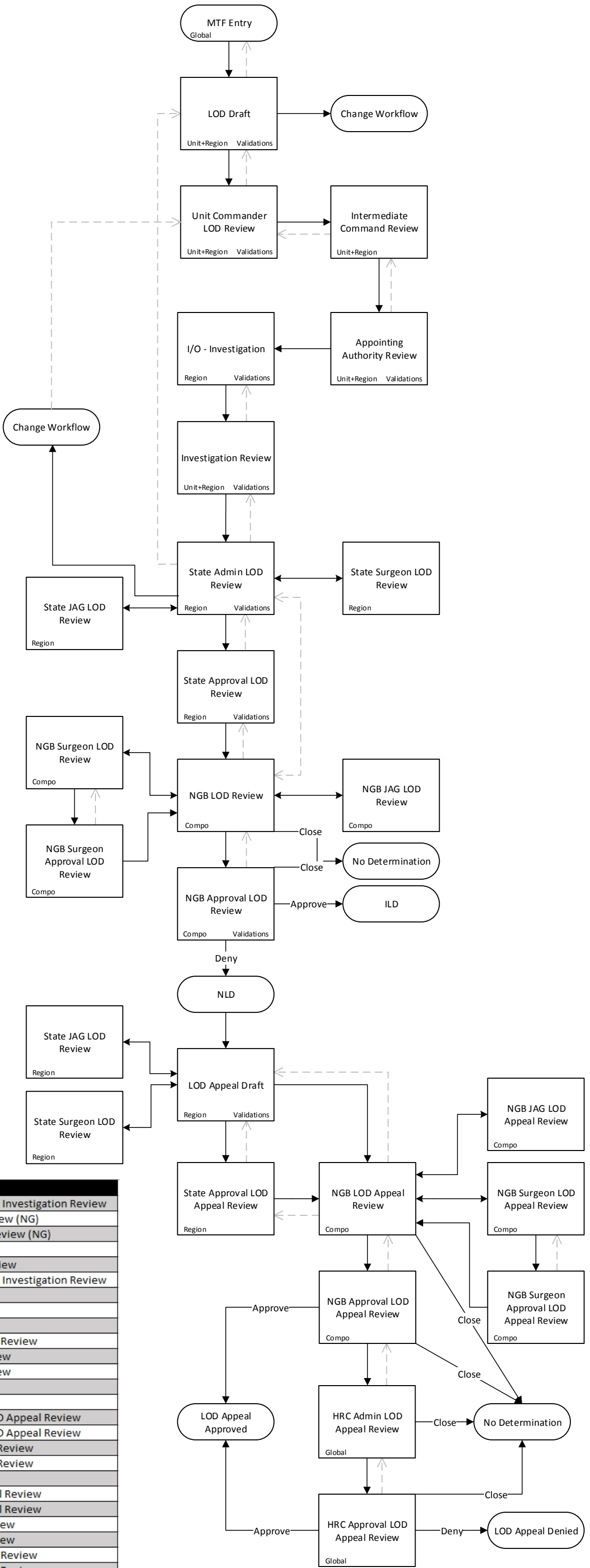


Workflow Status	Permission
LOD Draft (NG)	LOD Draft (NG)
NGB Approval LOD Review (NG)	NGB Approval LOD & Appeal Review
NGB JAG LOD Review (NG)	NGB JAG LOD & Appeal Review
NGB LOD Review (NG)	NGB LOD & Appeal Review
NGB Surgeon Approval LOD Review (NG)	NGB Surgeon Approval & LOD Appeal Review
NGB Surgeon LOD Review (NG)	NGB Surgeon LOD & Appeal Review
State Admin LOD Review (NG)	State Admin LOD Review
State Approval LOD Review (NG)	State Approval LOD & Appeal Review
State JAG LOD Review (NG)	State JAG LOD & Appeal Review
State Surgeon LOD Review (NG)	State Surgeon LOD & Appeal Review
Unit Commander LOD Review (NG)	Unit Commander LOD Review (NG)

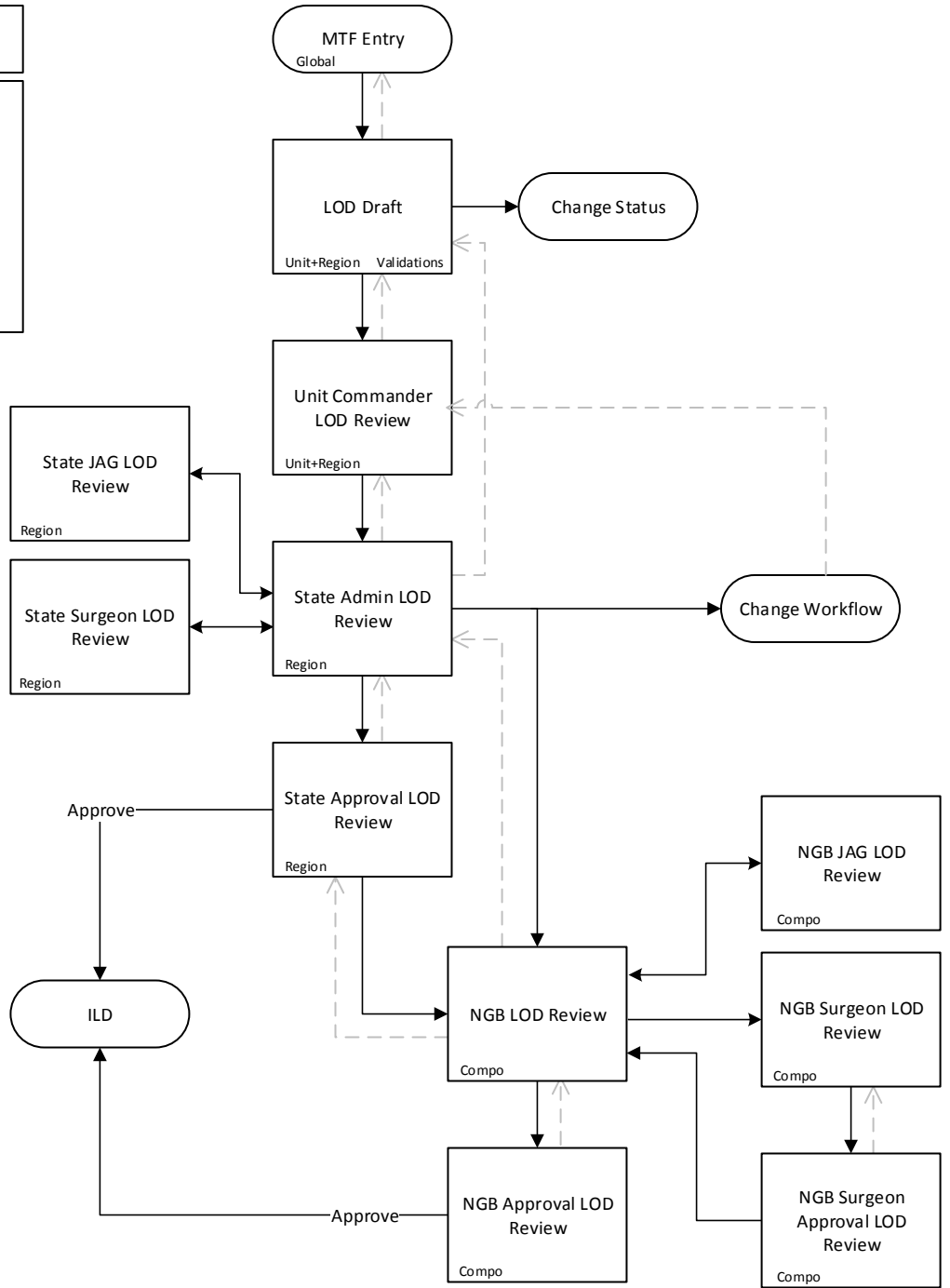
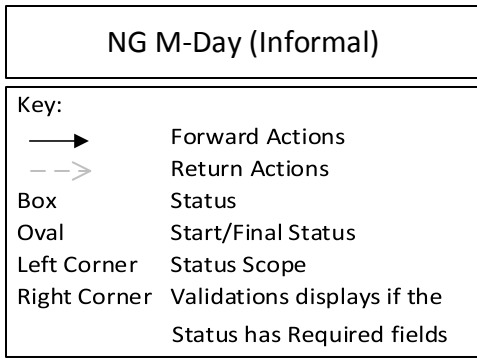
**NG Title 32 (Formal)**

Key:

- Forward Actions
- -> Return Actions
- Box Status
- Oval Start/Final Status
- Left Corner Status Scope
- Right Corner Validations displays if the Status has Required fields



Workflow Status	Permission
Appointing Authority Review (NG)	Appointing Authority (NG) & Investigation Review
HRC Admin LOD Appeal Review (NG)	HRC Admin LOD Appeal Review (NG)
HRC Approval LOD Appeal Review (NG)	HRC Approval LOD Appeal Review (NG)
I/O - Investigation (NG)	I/O - Investigation (NG)
Intermediate Command Review (NG)	Intermediate Command Review
Investigation Review (NG)	Appointing Authority (NG) & Investigation Review
LOD Appeal Draft (NG)	LOD Appeal Draft (NG)
LOD Draft (NG)	LOD Draft (NG)
MTF Entry (NG)	MTF Entry (NG)
NGB Approval LOD Review (NG)	NGB Approval LOD & Appeal Review
NGB JAG LOD Appeal Review (NG)	NGB JAG LOD & Appeal Review
NGB JAG LOD Review (NG)	NGB JAG LOD & Appeal Review
NGB LOD Appeal Review (NG)	NGB LOD & Appeal Review
NGB LOD Review (NG)	NGB LOD & Appeal Review
NGB Surgeon Approval LOD Appeal Review (NG)	NGB Surgeon Approval & LOD Appeal Review
NGB Surgeon Approval LOD Review (NG)	NGB Surgeon Approval & LOD Appeal Review
NGB Surgeon LOD Appeal Review (NG)	NGB Surgeon LOD & Appeal Review
NGB Surgeon LOD Review (NG)	NGB Surgeon LOD & Appeal Review
State Admin LOD Review (NG)	State Admin LOD Review
State Approval LOD Appeal Review (NG)	State Approval LOD & Appeal Review
State Approval LOD Review (NG)	State Approval LOD & Appeal Review
State JAG LOD Appeal Review (NG)	State JAG LOD & Appeal Review
State JAG LOD Review (NG)	State JAG LOD & Appeal Review
State Surgeon LOD Appeal Review (NG)	State Surgeon LOD & Appeal Review
State Surgeon LOD Review (NG)	State Surgeon LOD & Appeal Review
Unit Commander LOD Review (NG)	Unit Commander LOD Review (NG)

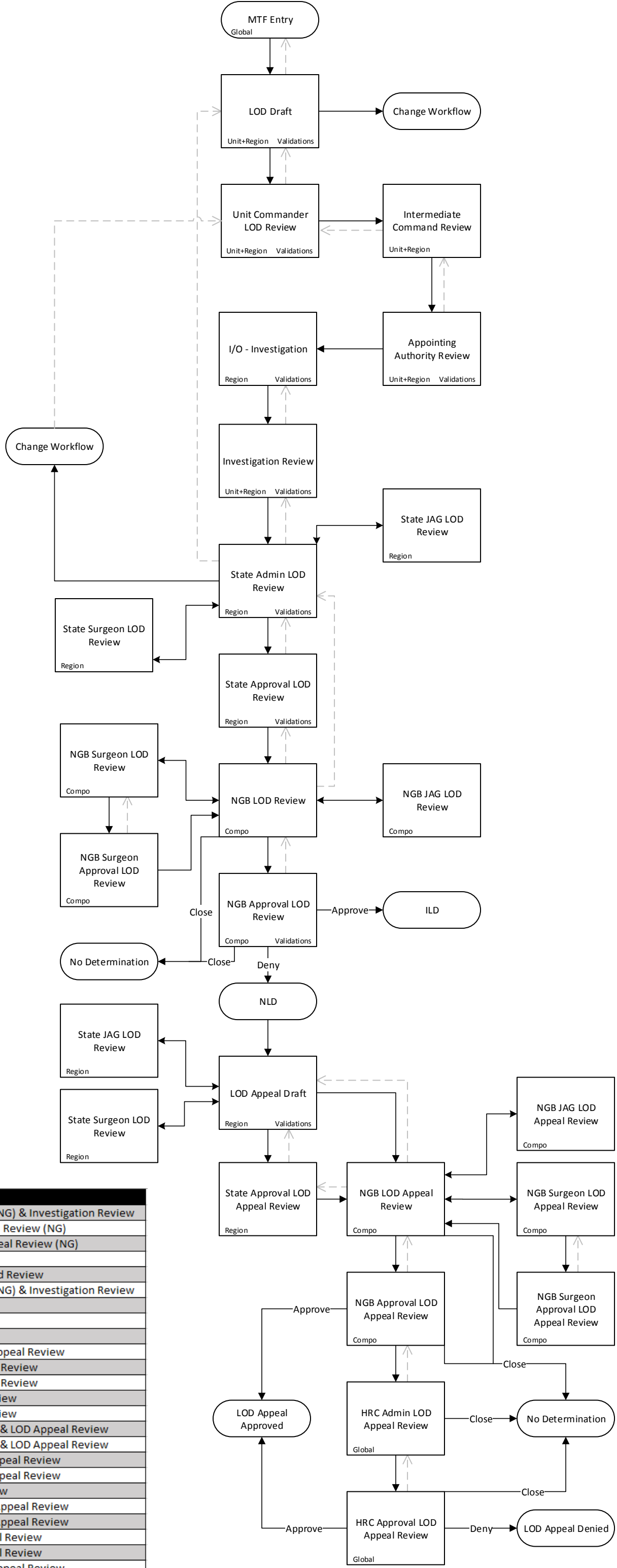


Workflow Status	Permission
LOD Draft (NG)	LOD Draft (NG)
NGB Approval LOD Review (NG)	NGB Approval LOD & Appeal Review
NGB JAG LOD Review (NG)	NGB JAG LOD & Appeal Review
NGB LOD Review (NG)	NGB LOD & Appeal Review
NGB Surgeon Approval LOD Review (NG)	NGB Surgeon Approval & LOD Appeal Review
NGB Surgeon LOD Review (NG)	NGB Surgeon LOD & Appeal Review
State Admin LOD Review (NG)	State Admin LOD Review
State Approval LOD Review (NG)	State Approval LOD & Appeal Review
State JAG LOD Review (NG)	State JAG LOD & Appeal Review
State Surgeon LOD Review (NG)	State Surgeon LOD & Appeal Review
Unit Commander LOD Review (NG)	Unit Commander LOD Review (NG)

**NG M-Day (Formal)**

Key:

- Forward Actions
- -> Return Actions
- Box Status
- Oval Start/Final Status
- Left Corner Status Scope
- Right Corner Validations displays if the Status has Required fields

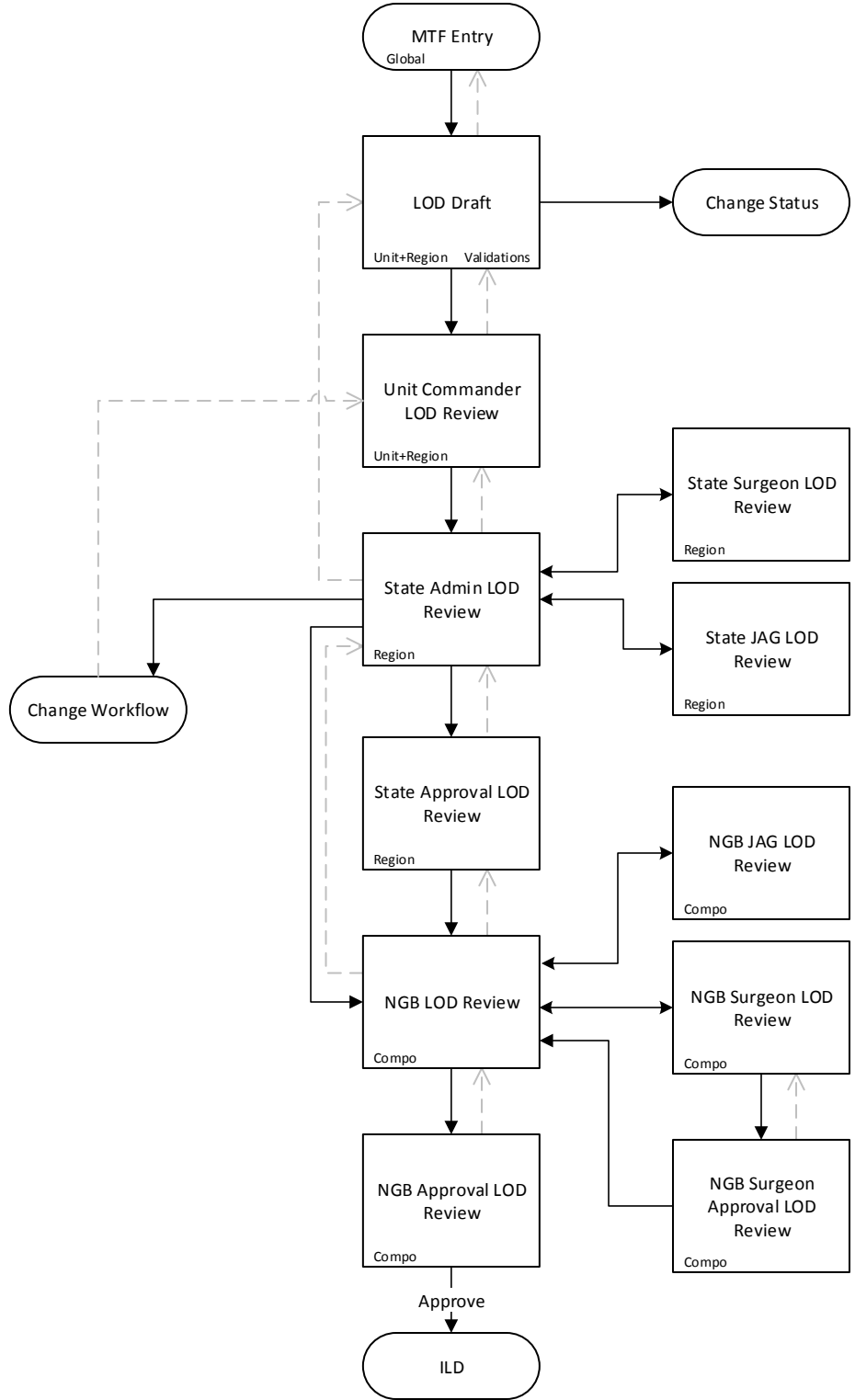


Workflow Status	Permission
Appointing Authority Review (NG)	Appointing Authority (NG) & Investigation Review
HRC Admin LOD Appeal Review (NG)	HRC Admin LOD Appeal Review (NG)
HRC Approval LOD Appeal Review (NG)	HRC Approval LOD Appeal Review (NG)
I/O - Investigation (NG)	I/O - Investigation (NG)
Intermediate Command Review (NG)	Intermediate Command Review
Investigation Review (NG)	Appointing Authority (NG) & Investigation Review
LOD Appeal Draft (NG)	LOD Appeal Draft (NG)
LOD Draft (NG)	LOD Draft (NG)
MTF Entry (NG)	MTF Entry (NG)
NGB Approval LOD Review (NG)	NGB Approval LOD & Appeal Review
NGB JAG LOD Appeal Review (NG)	NGB JAG LOD & Appeal Review
NGB JAG LOD Review (NG)	NGB JAG LOD & Appeal Review
NGB LOD Appeal Review (NG)	NGB LOD & Appeal Review
NGB LOD Review (NG)	NGB LOD & Appeal Review
NGB Surgeon Approval LOD Appeal Review (NG)	NGB Surgeon Approval & LOD Appeal Review
NGB Surgeon Approval LOD Review (NG)	NGB Surgeon Approval & LOD Appeal Review
NGB Surgeon LOD Appeal Review (NG)	NGB Surgeon LOD & Appeal Review
NGB Surgeon LOD Review (NG)	NGB Surgeon LOD & Appeal Review
State Admin LOD Review (NG)	State Admin LOD Review
State Approval LOD Appeal Review (NG)	State Approval LOD & Appeal Review
State Approval LOD Review (NG)	State Approval LOD & Appeal Review
State JAG LOD Appeal Review (NG)	State JAG LOD & Appeal Review
State JAG LOD Review (NG)	State JAG LOD & Appeal Review
State Surgeon LOD Appeal Review (NG)	State Surgeon LOD & Appeal Review
State Surgeon LOD Review (NG)	State Surgeon LOD & Appeal Review
Unit Commander LOD Review (NG)	Unit Commander LOD Review (NG)

**NG Title 10 (Informal)**

**Key:**

- Forward Actions
- - -> Return Actions
- Box Status
- Oval Start/Final Status
- Left Corner Status Scope
- Right Corner Validations displays if the Status has Required fields



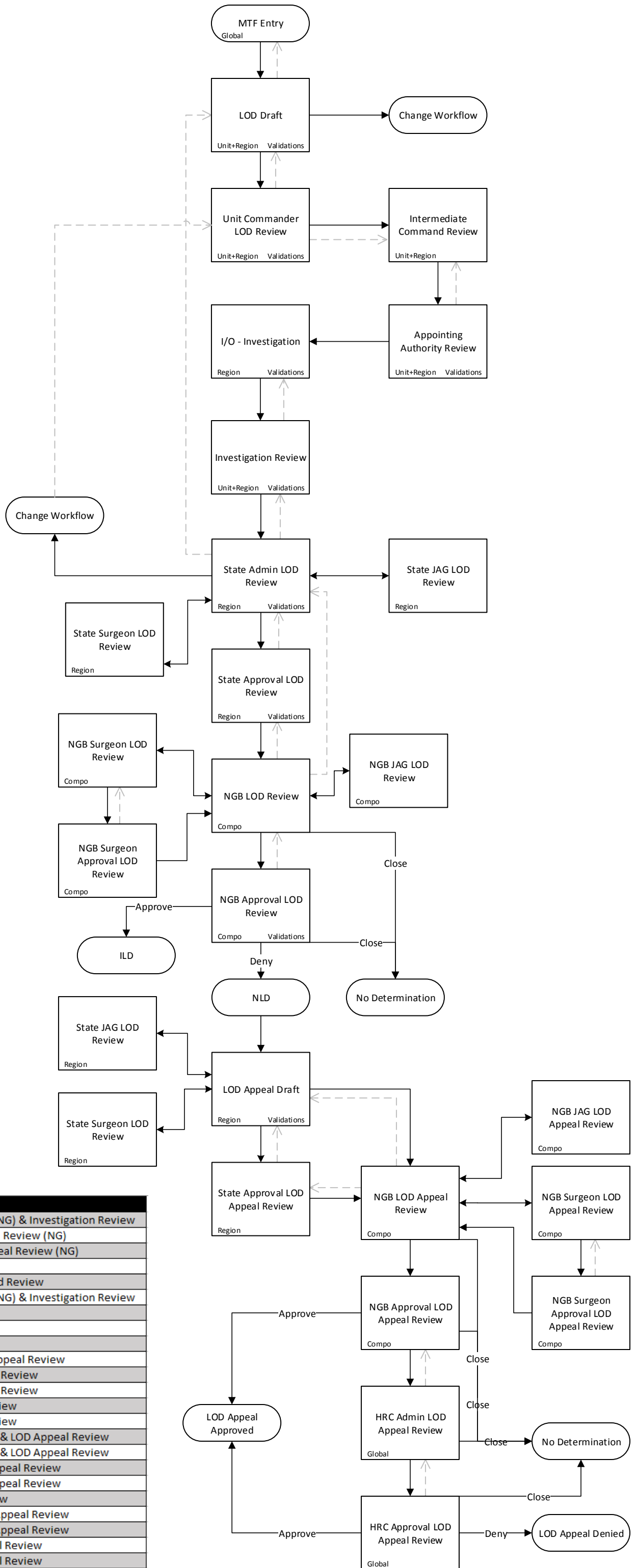
Workflow Status	Permission
LOD Draft (NG)	LOD Draft (NG)
NGB Approval LOD Review (NG)	NGB Approval LOD & Appeal Review
NGB JAG LOD Review (NG)	NGB JAG LOD & Appeal Review
NGB LOD Review (NG)	NGB LOD & Appeal Review
NGB Surgeon Approval LOD Review (NG)	NGB Surgeon Approval & LOD Appeal Review
NGB Surgeon LOD Review (NG)	NGB Surgeon LOD & Appeal Review
State Admin LOD Review (NG)	State Admin LOD Review
State Approval LOD Review (NG)	State Approval LOD & Appeal Review
State JAG LOD Review (NG)	State JAG LOD & Appeal Review
State Surgeon LOD Review (NG)	State Surgeon LOD & Appeal Review
Unit Commander LOD Review (NG)	Unit Commander LOD Review (NG)



**NG Title 10 (Formal)**

Key:

- Forward Actions
- -> Return Actions
- Box Status
- Oval Start/Final Status
- Left Corner Status Scope
- Right Corner Validations displays if the Status has Required fields

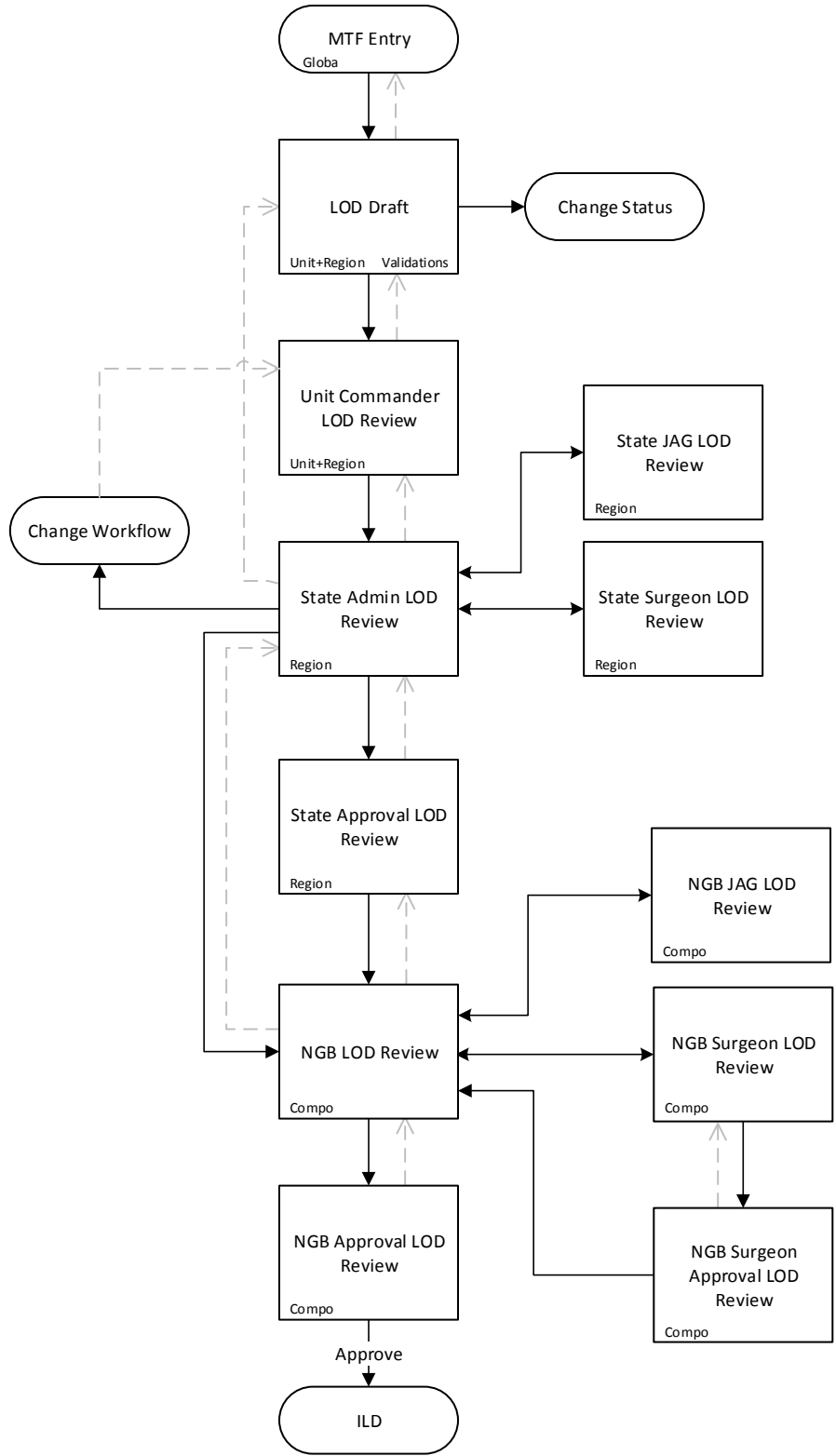


Workflow Status	Permission
Appointing Authority Review (NG)	Appointing Authority (NG) & Investigation Review
HRC Admin LOD Appeal Review (NG)	HRC Admin LOD Appeal Review (NG)
HRC Approval LOD Appeal Review (NG)	HRC Approval LOD Appeal Review (NG)
I/O - Investigation (NG)	I/O - Investigation (NG)
Intermediate Command Review (NG)	Intermediate Command Review
Investigation Review (NG)	Appointing Authority (NG) & Investigation Review
LOD Appeal Draft (NG)	LOD Appeal Draft (NG)
LOD Draft (NG)	LOD Draft (NG)
MTF Entry (NG)	MTF Entry (NG)
NGB Approval LOD Review (NG)	NGB Approval LOD & Appeal Review
NGB JAG LOD Appeal Review (NG)	NGB JAG LOD & Appeal Review
NGB JAG LOD Review (NG)	NGB JAG LOD & Appeal Review
NGB LOD Appeal Review (NG)	NGB LOD & Appeal Review
NGB LOD Review (NG)	NGB LOD & Appeal Review
NGB Surgeon Approval LOD Appeal Review (NG)	NGB Surgeon Approval & LOD Appeal Review
NGB Surgeon Approval LOD Review (NG)	NGB Surgeon Approval & LOD Appeal Review
NGB Surgeon LOD Appeal Review (NG)	NGB Surgeon LOD & Appeal Review
NGB Surgeon LOD Review (NG)	NGB Surgeon LOD & Appeal Review
State Admin LOD Review (NG)	State Admin LOD Review
State Approval LOD Appeal Review (NG)	State Approval LOD & Appeal Review
State Approval LOD Review (NG)	State Approval LOD & Appeal Review
State JAG LOD Appeal Review (NG)	State JAG LOD & Appeal Review
State JAG LOD Review (NG)	State JAG LOD & Appeal Review
State Surgeon LOD Appeal Review (NG)	State Surgeon LOD & Appeal Review
State Surgeon LOD Review (NG)	State Surgeon LOD & Appeal Review
Unit Commander LOD Review (NG)	Unit Commander LOD Review (NG)

**NG OCONUS (Informal)**

Key:

- Forward Actions
- - -> Return Actions
- Box Status
- Oval Start/Final Status
- Left Corner Status Scope
- Right Corner Validations displays if the Status has Required fields

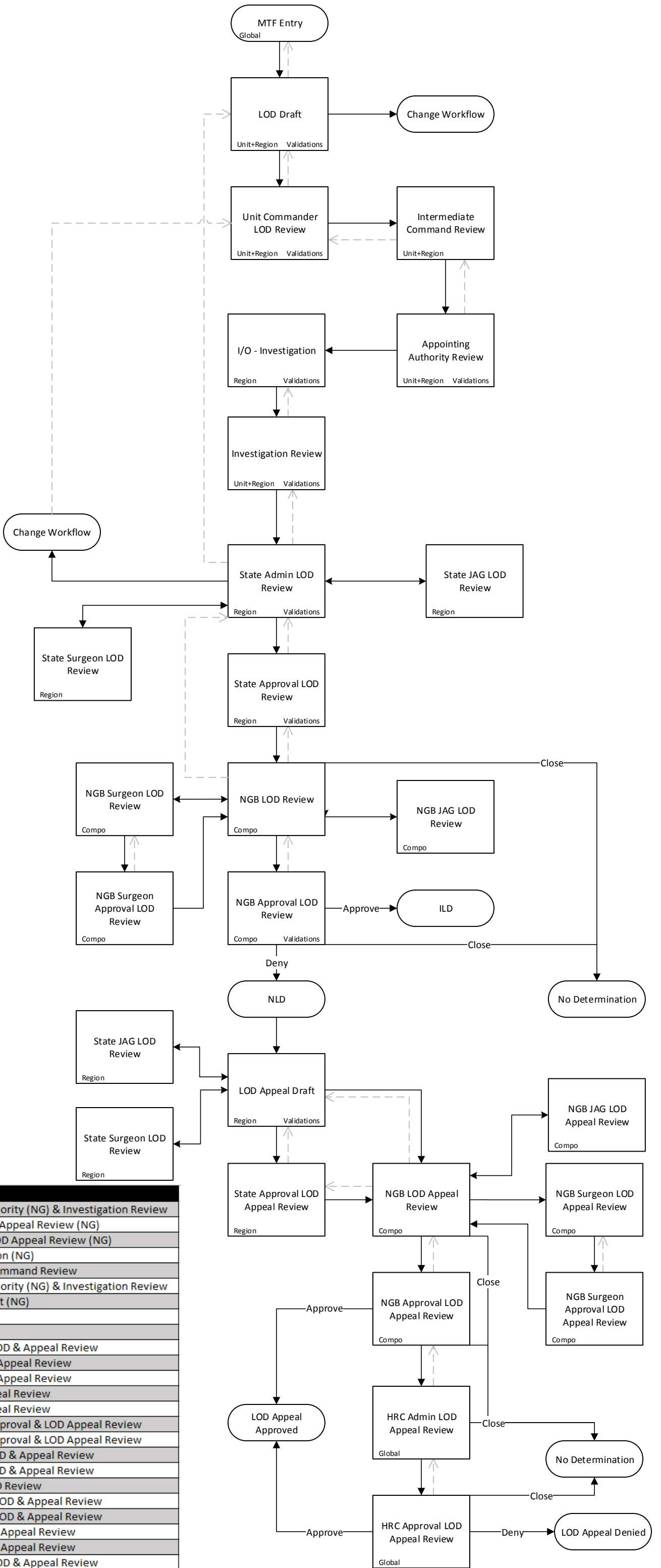


Workflow Status	Permission
LOD Draft (NG)	LOD Draft (NG)
NGB Approval LOD Review (NG)	NGB Approval LOD & Appeal Review
NGB JAG LOD Review (NG)	NGB JAG LOD & Appeal Review
NGB LOD Review (NG)	NGB LOD & Appeal Review
NGB Surgeon Approval LOD Review (NG)	NGB Surgeon Approval & LOD Appeal Review
NGB Surgeon LOD Review (NG)	NGB Surgeon LOD & Appeal Review
State Admin LOD Review (NG)	State Admin LOD Review
State Approval LOD Review (NG)	State Approval LOD & Appeal Review
State JAG LOD Review (NG)	State JAG LOD & Appeal Review
State Surgeon LOD Review (NG)	State Surgeon LOD & Appeal Review
Unit Commander LOD Review (NG)	Unit Commander LOD Review (NG)

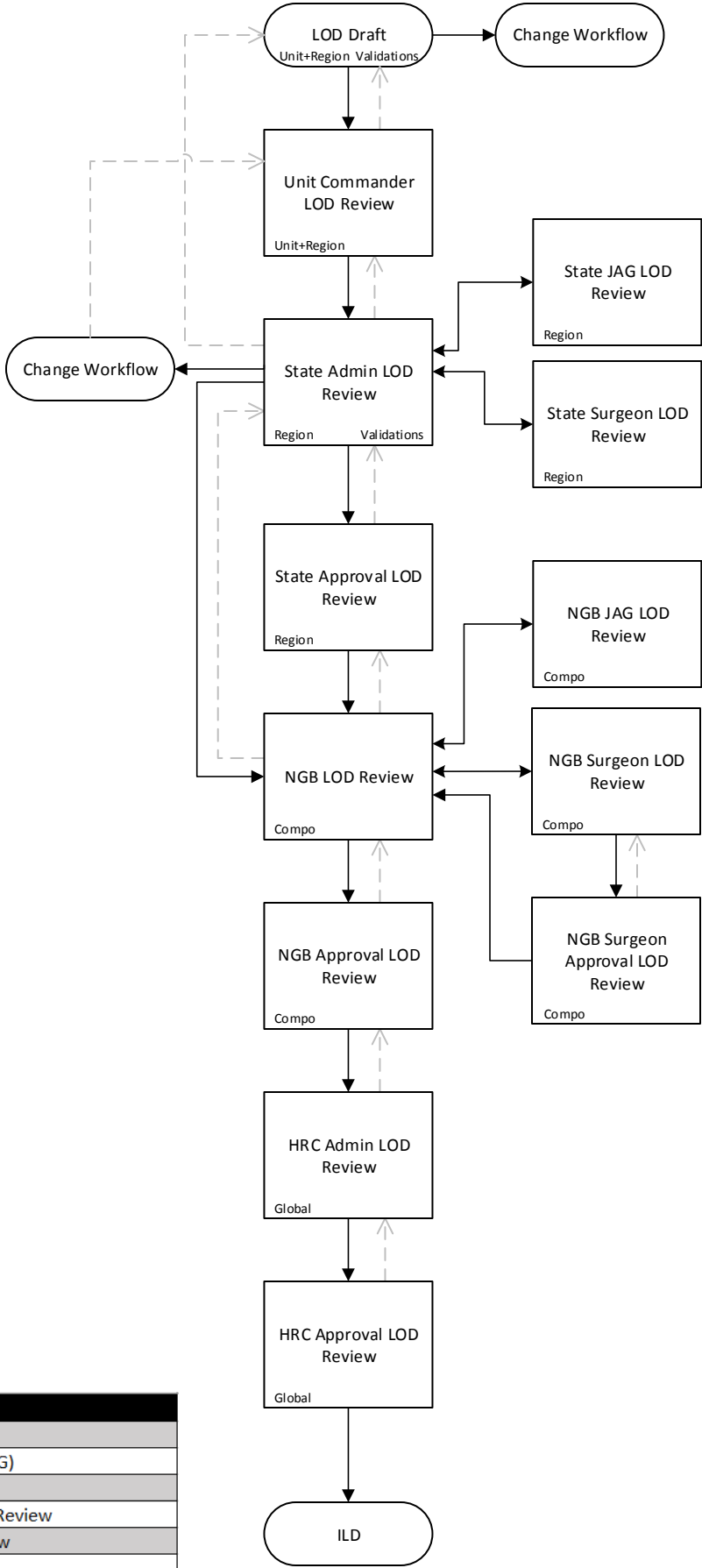
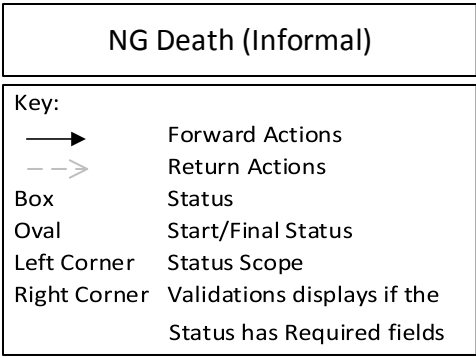
**NG OCONUS (Formal)**

Key:

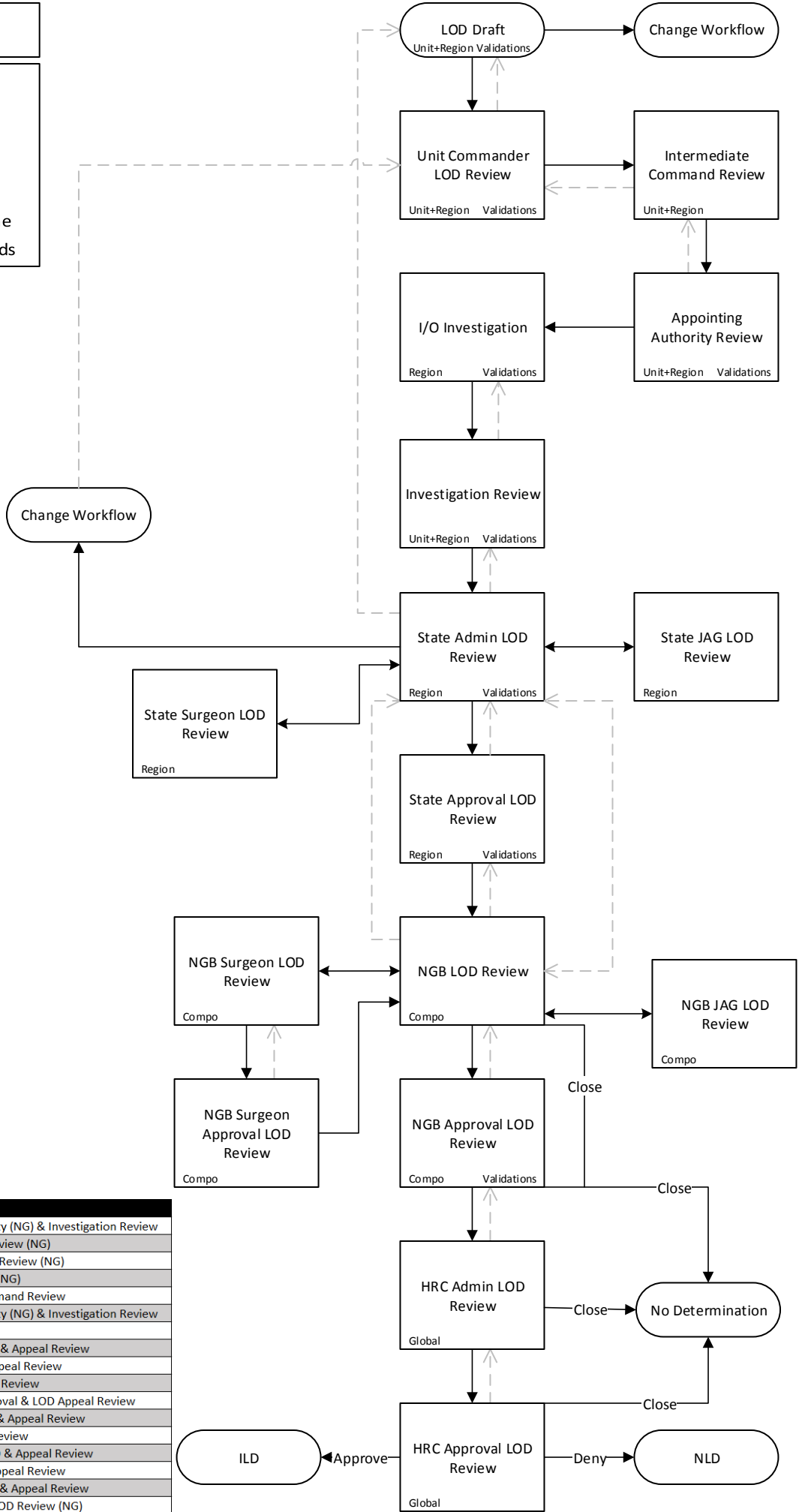
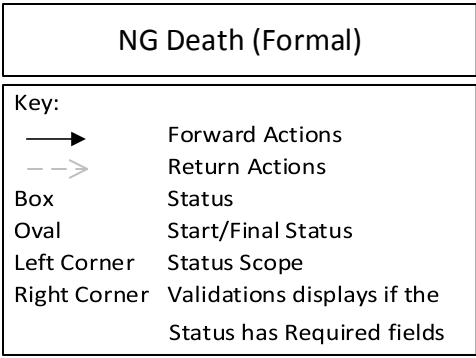
- Forward Actions
- -> Return Actions
- Box Status
- Oval Start/Final Status
- Left Corner Status Scope
- Right Corner Validations displays if the Status has Required fields



Workflow Status	Permission
Appointing Authority Review (NG)	Appointing Authority (NG) & Investigation Review
HRC Admin LOD Appeal Review (NG)	HRC Admin LOD Appeal Review (NG)
HRC Approval LOD Appeal Review (NG)	HRC Approval LOD Appeal Review (NG)
I/O - Investigation (NG)	I/O - Investigation (NG)
Intermediate Command Review (NG)	Intermediate Command Review
Investigation Review (NG)	Appointing Authority (NG) & Investigation Review
LOD Appeal Draft (NG)	LOD Appeal Draft (NG)
LOD Draft (NG)	LOD Draft (NG)
MTF Entry (NG)	MTF Entry (NG)
NGB Approval LOD Review (NG)	NGB Approval LOD & Appeal Review
NGB JAG LOD Appeal Review (NG)	NGB JAG LOD & Appeal Review
NGB JAG LOD Review (NG)	NGB JAG LOD & Appeal Review
NGB LOD Appeal Review (NG)	NGB LOD & Appeal Review
NGB LOD Review (NG)	NGB LOD & Appeal Review
NGB Surgeon Approval LOD Appeal Review (NG)	NGB Surgeon Approval & LOD Appeal Review
NGB Surgeon Approval LOD Review (NG)	NGB Surgeon Approval & LOD Appeal Review
NGB Surgeon LOD Appeal Review (NG)	NGB Surgeon LOD & Appeal Review
NGB Surgeon LOD Review (NG)	NGB Surgeon LOD & Appeal Review
State Admin LOD Review (NG)	State Admin LOD Review
State Approval LOD Appeal Review (NG)	State Approval LOD & Appeal Review
State Approval LOD Review (NG)	State Approval LOD & Appeal Review
State JAG LOD Appeal Review (NG)	State JAG LOD & Appeal Review
State JAG LOD Review (NG)	State JAG LOD & Appeal Review
State Surgeon LOD Appeal Review (NG)	State Surgeon LOD & Appeal Review
State Surgeon LOD Review (NG)	State Surgeon LOD & Appeal Review
Unit Commander LOD Review (NG)	Unit Commander LOD Review (NG)



Workflow Status	Permission
HRC Admin LOD Review (NG)	HRC Admin LOD Review (NG)
HRC Approval LOD Review (NG)	HRC Approval LOD Review (NG)
LOD Draft (NG)	LOD Draft (NG)
NGB Approval LOD Review (NG)	NGB Approval LOD & Appeal Review
NGB JAG LOD Review (NG)	NGB JAG LOD & Appeal Review
NGB LOD Review (NG)	NGB LOD & Appeal Review
NGB Surgeon Approval LOD Review (NG)	NGB Surgeon Approval & LOD Appeal Review
NGB Surgeon LOD Review (NG)	NGB Surgeon LOD & Appeal Review
State Admin LOD Review (NG)	State Admin LOD Review
State Approval LOD Review (NG)	State Approval LOD & Appeal Review
State JAG LOD Review (NG)	State JAG LOD & Appeal Review
State Surgeon LOD Review (NG)	State Surgeon LOD & Appeal Review
Unit Commander LOD Review (NG)	Unit Commander LOD Review (NG)



Workflow Status	Permission
Appointing Authority Review (NG)	Appointing Authority (NG) & Investigation Review
HRC Admin LOD Review (NG)	HRC Admin LOD Review (NG)
HRC Approval LOD Review (NG)	HRC Approval LOD Review (NG)
I/O - Investigation (NG)	I/O - Investigation (NG)
Intermediate Command Review (NG)	Intermediate Command Review
Investigation Review (NG)	Appointing Authority (NG) & Investigation Review
LOD Draft (NG)	LOD Draft (NG)
NGB Approval LOD Review (NG)	NGB Approval LOD & Appeal Review
NGB JAG LOD Review (NG)	NGB JAG LOD & Appeal Review
NGB LOD Review (NG)	NGB LOD & Appeal Review
NGB Surgeon Approval LOD Review (NG)	NGB Surgeon Approval & LOD Appeal Review
NGB Surgeon LOD Review (NG)	NGB Surgeon LOD & Appeal Review
State Admin LOD Review (NG)	State Admin LOD Review
State Approval LOD Review (NG)	State Approval LOD & Appeal Review
State JAG LOD Review (NG)	State JAG LOD & Appeal Review
State Surgeon LOD Review (NG)	State Surgeon LOD & Appeal Review
Unit Commander LOD Review (NG)	Unit Commander LOD Review (NG)